



# Flight Plan & Site Survey

Created using **RPAS Wilco**<sup>®</sup>

Operation Name:	Sky Harbour -Open Sky field
Pilot Name:	██████████
Pilot Certificate:	██████████
Flight Start:	January 24, 2023 7:00 PM
Flight End:	January 24, 2023 9:00 PM
Flight Area (Latitude):	43° 39' 42.10" N ( 43.662 )
Flight Area (Longitude):	81° 39' 42.20" W ( -81.662 )
Altitude - Radius:	Alt: 700 ft - Rad: 926.0 m ( 0.5 nm)
Airspace:	UNCONTROLLED
FIR - Contact:	CZYZ - 905-676-4509
Weather:	-1.4 Celsius - Snow, Overcast

Please ensure you received all required authorizations prior to flight.

## Disclaimer

This Site Survey was created using RPAS Wilco by AIM Robotics. The flight plan contained is intended only for RPAS flights on the date/time and location specified. The user accepts all responsibility for the accuracy and completeness of the information contained.

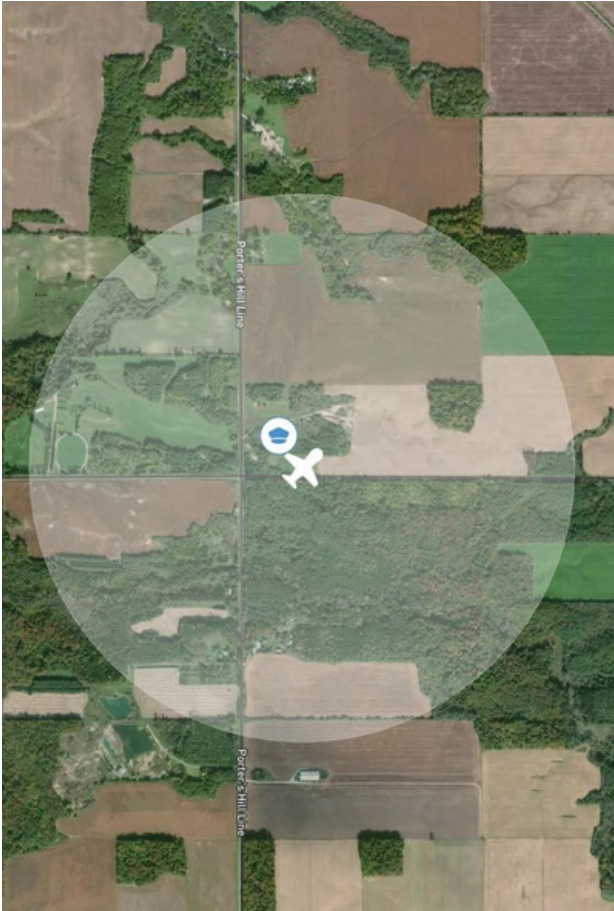
For the complete Terms & Conditions, see

<https://rpswilco.com/#/tnc>



## Included

- Site Survey
- Obstacles (if available)
- Nearby Aerodromes
- Canadian Aviation Regulations
- GFA
- Aerodrome Supplements
  - METAR & TAF (if available)
  - NOTAMS
  - CFS

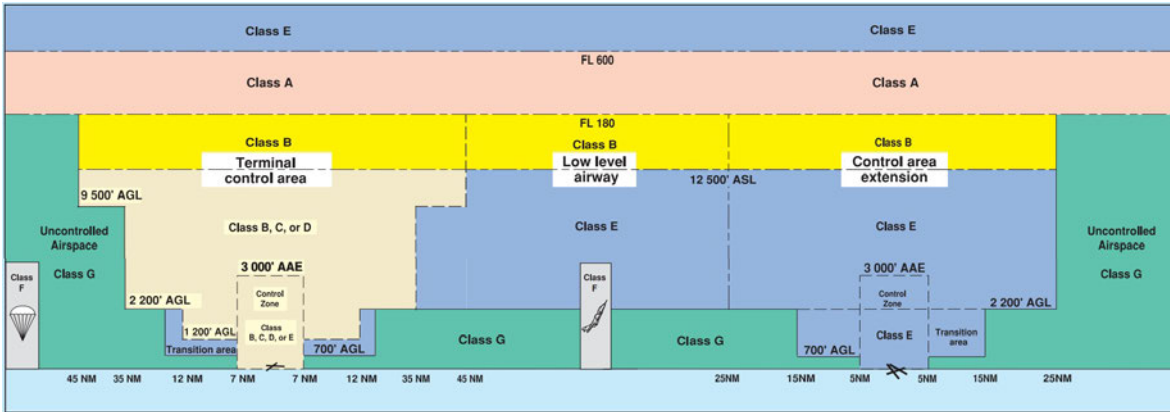
## Flight Map



## MAP Details

	Latitude	Longitude
 <b>MODEL</b>	43° 39' 42.10" N ( 43.662 )	81° 39' 42.20" W ( -81.662 )
 <b>Pilot</b>	43° 39' 45.70" N ( 43.6627 )	81° 39' 45.80" W ( -81.6627 )

## Airspace Classification



## Overlying Airspaces

Class	Name	Floor	Ceiling
E	Southern Ontario Low Level Control Area CAE	2500MSL	6500MSL
E	Southern Ontario Low Level Control Area CAE	6500MSL	12500MSL
B	Southern Ontario Low Level Control Area CAE	12500MSL	18000MSL
E	T616 Airway	2200AGL	12500MSL
B	T616 Airway	12500MSL	18000MSL
E	T616 Airway	2200AGL	12500MSL
B	T616 Airway	12500MSL	18000MSL
E	Southern Ontario Low Level Control Area CAE	3500MSL	12500MSL
B	Southern Ontario Low Level Control Area CAE	12500MSL	18000MSL

## Nearest Aerodromes & Distance from Operation

GODERICH (CYGD AERODROME Reg)	Lat: 43.768	Long: 81.711	12.466 KM	6.73 NM
DUNGANNON (CDG3 AERODROME Reg)	Lat: 43.836	Long: 81.607	19.874 KM	10.73 NM
EXETER (CSX7 AERODROME Reg)	Lat: 43.377	Long: 81.504	34.116 KM	18.42 NM
BRUSSELS (ARMSTRONG FIELD) (CPD4 AERODROME Reg)	Lat: 43.75	Long: 81.233	35.833 KM	19.35 NM

## Weather Information for Mission Day

Summary: Cloudy skies throughout the day with snow.

Condition	Temperature	Feels Like	Precipitation	Visibility	Cloud Coverage	Wind Speed	Humidity
Snow, Overcast	1.4 Celsius	7.5 Celsius	98.0 %	5.8 Km	90.3 %	36.0 kph	89.1 %

## ONTARIO

## AERODROME/FACILITY DIRECTORY

## GODERICH ON

CYGD

<b>REF</b>	N43 46 04 W81 42 39 1.5N 9°W (2015) UTC-5(4) Elev 709' A5000 LO6 HI5 CAP	
<b>OPR</b>	Muni 519-524-2915 Reg	
<b>PF</b>	B-2 C-3,4,5,6,7	
<b>CUST</b>	AOE/15 888-226-7277 14-22Z† Mon-Fri exc hols	
<b>FLT PLN</b>		
<b>FIG</b>	London 866-WXBRIEF (Toll free within Canada) or 866-541-4104 (Toll free within Canada & USA)	
<b>WX</b>	ALTIMETER/WIND ltd hrs (see COMM)	
<b>SERVICES</b>	Call out chg for one or more svcs may be levied after hrs.	
<b>FUEL</b>	100LL, JA-1 Cardlock avbl at tml, SP PN 519-525-2383	
<b>OIL</b>	15W50	
<b>S</b>	4,5,6	
<b>RWY DATA</b>	Rwy 14(137°)/32(317°) 5034x100 ASPH Rwy 14 up 0.45% Rwy 10(099°)/28(279°) 3002x50 ASPH Rwy 05(048°)/23(228°) 1871x80 TURF	
<b>RCR</b>	519-525-2383 12-21Z† Mon-Fri, O/T ltd hrs. Rwy 05/23 no win maint.	
<b>LIGHTING</b>	10-(TE LO) AP 3.5°, 28-(TE LO) AP, 14-AS(TE LO) AP, 32-AS(TE LO) AP ARCAL-122.7 type J	
<b>COMM</b>		
<b>ATF</b>	UNICOM (AU) ltd hrs O/T tfc 122.7 5NM 3700 ASL	
<b>PRO</b>	Rgt hand circuits Rwy 05 (CAR 602.96).	
<b>CAUTION</b>	Possible wind shear on apch Rwy 14. Ocsl wildlife crossing rwys. Ocsl radio-controlled acft operating on Rwy 10/28.	

## ONTARIO

## AERODROME/FACILITY DIRECTORY

## DUNGANNON ON

CDG3

<b>REF</b>	N43 50 11 W81 36 24 1S 9°W UTC-5(4) Elev 870' A5000
<b>OPR</b>	Mari Vanderveeken 519-263-2550 Reg
<b>PF</b>	B-1 D-2, 3, 4, 5, 6
<b>FLT PLN</b>	
<b>FIC</b>	London 866-WXBRIEF (Toll free within Canada) or 866-541-4104 (Toll free within Canada & USA)
<b>RWY DATA</b>	Rwy 13(128°)/31(308°) 1928x75 turf Rwy 13 up 1.04%
<b>RCR</b>	Opr No win maint
<b>LIGHTING</b>	13-(TE LO), 31-(TE LO) PN opr
<b>COMM</b>	
<b>ATF</b>	tfc 122.7 5NM 3900 ASL
<b>CAUTION</b>	Low slope ditch at end of Rwy 31



## ONTARIO

## AERODROME/FACILITY DIRECTORY

## SEXSMITH / EXETER ON

CSX7

<b>REF</b>	N43 22 38 W81 30 15 1NW 9°W UTC-5(4) Elev 856' A5000	
<b>OPR</b>	Sexsmith Pilots Ltd 519-237-3154 or ctc David Frayne 519-235-1409 or Ross Alexander 519-670-5857 Reg	
<b>PF</b>	B-1 C-2,3,4,5,6	
<b>FLT PLN</b>		
<b>FIC</b>	London 866-WXBRIEF (Toll free within Canada) or 866-541-4104 (Toll free within Canada & USA)	
<b>SERVICES</b>		
<b>FUEL</b>	100LL PN	
<b>S</b>	4,5,6	
<b>RWY DATA</b>	Rwy 09/27 3100x90 turf/snow Thld rwy 09 displ 550'	
<b>RCR</b>	Opr Ltd win maint, soft when wet and spring haw, call prior	
<b>COMM</b>		
<b>ATF</b>	123.2 5NM 3900 ASL	
<b>CAUTION</b>	Marked wires and poles hld Rwy 09. CYCE 5NM S 122.8.	

## ONTARIO

## AERODROME/FACILITY DIRECTORY

## BRUSSELS (ARMSTRONG FIELD) ON

CPD4

<b>REF</b>	N43 45 W81 14 Adj E 9°W UTC-5(4) Elev 1100' A5000
<b>OPR</b>	W.J. Armstrong 519-887-6753 Reg
<b>PF</b>	B-1 C-2,4,5 D-3,6
<b>FLT PLN</b>	
<b>FIC</b>	London 866-WXBRIEF (Toll free within Canada) or 866-541-4104 (Toll free within Canada & USA)
<b>RWY DATA</b>	Rwy 04/22 2500x70 turf Rwy 17/35 1700x120 turf Thld 35 displ 200'.
<b>RCR</b>	Opr No win maint
<b>CAUTION</b>	Grove of aprx 75 AGL trees off Thld 22 end. Twr 345 AGL 1NM SW & 200 AGL 0.5NM NW.

